



Northumberland
County Council

Great Northumberland Forest

Northumberland Wildfire Group

www.northumberland.gov.uk



The Great Northumberland Forest is a plan to plant millions of trees, creating more wooded landscapes across the County by 2030 to help tackle the big challenges facing society such as climate change, biodiversity decline, while promoting health and wellbeing, and supporting a thriving local economy.

A variety of different woodland types and sizes will be created across our diverse County - together they will be known as the Great Northumberland Forest.

The Great Northumberland Forest was announced in Autumn 2019 with the first phase being the creation of 3 new forests covering 500ha, planting a million trees by 2024



Rushy Knowe – Forestry England, 145ha

Monkridge – Forestry England, 100ha

Exploring opportunities with partners to deliver the rest

Since 2019 767ha of new woodland have been planted and over 240,000 trees planted in addition to the 767ha*



The Northumberland Woodland Creation Partnership was then formed to facilitate a step change in the pace and extent of appropriate tree planting schemes across the County



Mission

- Reduce the impacts of climate change and support local climate action
- Enhance biodiversity, nature and landscapes
- Boost rural economic prosperity by growing our thriving forestry and wood processing sector
- Improve recreational amenities, supporting better mental and physical health and wellbeing
- Lead a post Covid 19 green recovery in Northumberland

We formally launched the programme in November 2021 to start the third phase of wider engagement with landowners, farmers and communities





Recreation

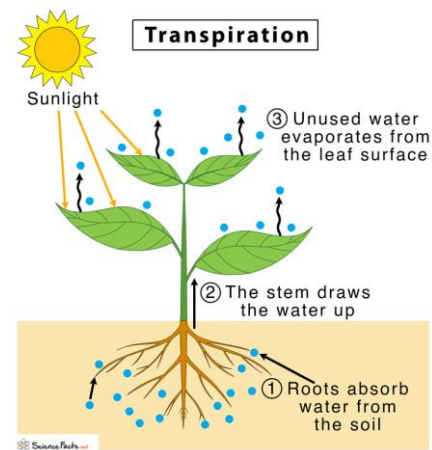
Soil health
and structure

Health and
wellbeing

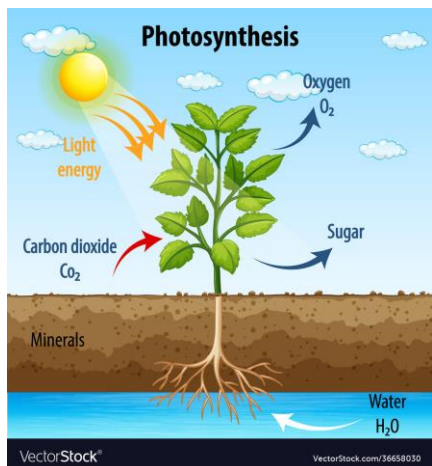
Improving
Air quality

Improving
water quality

So why are we doing this...?



Flood
prevention



Carbon
Sequestration

Landscape

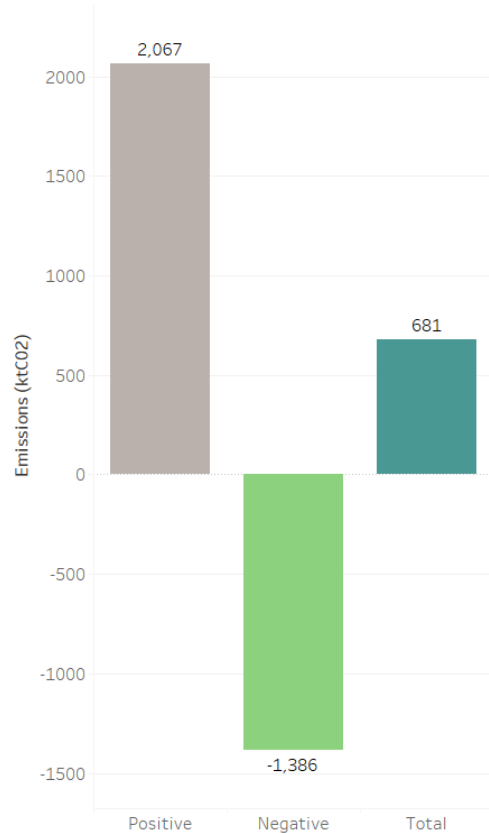
Timber
production



Home for
wildlife

Special habitats





- In 2019, total net emissions in Northumberland were reported by BEIS as 681 ktCO₂. This is made up from a combination of positive and negative emissions.
- The majority of these negative emissions are from sequestration from forests and grassland, highlighting the importance of woodland in the delivery of net zero.

So what are we doing...?

We provide a free service to explore and discuss the opportunities; how they would work for and with farmers and landowners' businesses; how they could be funded; and how communities can be involved – with no obligation to plant



Woodland Creation
Planning Grant

England Woodland
Creation Offer

Urban Tree
Challenge Fund



MOREwoods

MOREhedges

Trees for
your farm

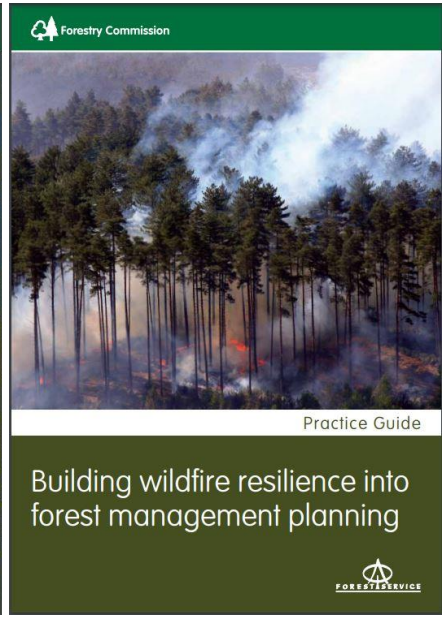
Big Farm
Tree Planting



Lease Partnership



Trees for Climate*





Woodland Creation Potential - Northumberland

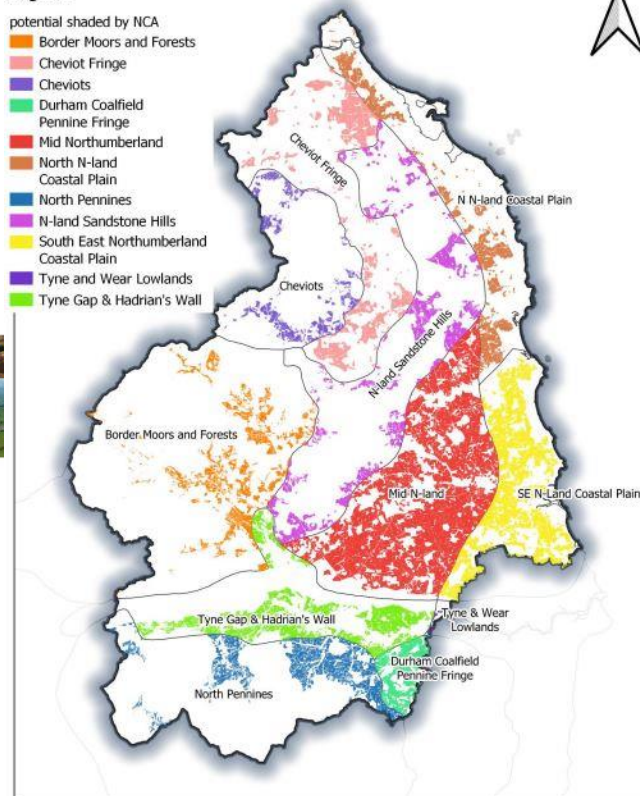
A county-level view of areas with greatest tree planting potential

All Wards
14th 5, 2011

Legend

potential shaded by NCA

- Border Moors and Forests
- Cheviot Fringe
- Cheviots
- Durham Coalfield
- Pennine Fringe
- Mid Northumberland
- North N-land Coastal Plain
- North Pennines
- N-land Sandstone Hills
- South East Northumberland Coastal Plain
- Tyne and Wear Lowlands
- Tyne Gap & Hadrian's Wall



Potential and National Character Areas

1:500,000

Northumberland
Northumberland County Council

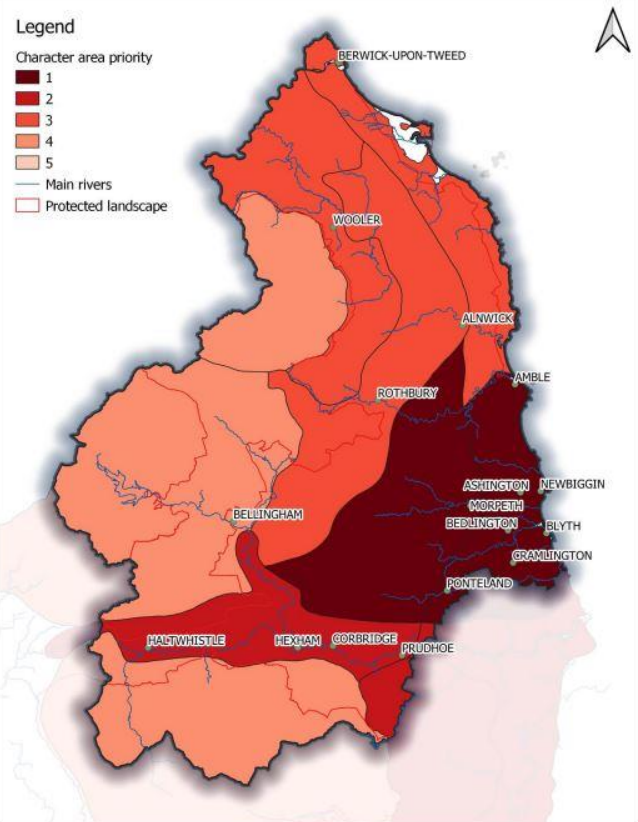


This map is reproduced from Ordnance Survey material with the permission of Ordnance Survey on behalf of the Controller of Her Majesty's Stationery Office. Crown Copyright. Unauthorised reproduction infringes Crown Copyright and may lead to prosecution or civil proceedings. Licence no. 0100049048 (2022). Also based upon LCM2015 © UKCEH 2011.

Legend

Character area priority

- 1
- 2
- 3
- 4
- 5
- Main rivers
- Protected landscape



National Character Areas prioritised

1:500,000

Northumberland
Northumberland County Council



This map is reproduced from Ordnance Survey material with the permission of Ordnance Survey on behalf of the Controller of Her Majesty's Stationery Office. Crown Copyright. Unauthorised reproduction infringes Crown Copyright and may lead to prosecution or civil proceedings. Licence no. 0100049048 (2022). Also based upon LCM2015 © UKCEH 2011. Scale correct at A4.

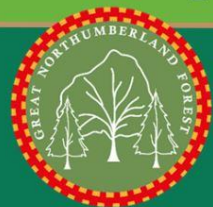
We have also been...

- Exploring opportunities for future management of the Council's existing 1200ha of woodland
- Successful in securing funding through the Local Authority Treescape Fund to plant over 3000 trees across the county as a visible demonstration of community led planting, contributing to the Great Northumberland Forest
- Supporting communities and parish councils with the Queen's Green Canopy Jubilee celebrations
- Working in partnership with the recently launched North East Community Forest on schemes around the county boundary.



Get involved

The Great Northumberland Forest is a plan to create more wooded landscapes across the county by 2030.



More trees will help tackle the big challenges facing society such as climate change and biodiversity decline, while promoting health and wellbeing and supporting a thriving local economy.



What we do

We can help with advice, where to find more information and how to access funding. Our free support includes discussing and assessing options and opportunities, and how they fit with your objectives.

Benefits

Tree planting can bring further benefits including:

- Soil stabilisation
- Shelter for animals
- Reducing your carbon footprint
- Diversifying your business



Approval

We can work with you and the relevant authorities to help gain the permissions you might need for your project to become a reality.

Funding

There is a range of funding options available to support tree and wood planting. We can help match funding opportunities that best suit your needs, and help with application writing.

Contact us

If you are looking for advice, want to get involved with tree planting or just some more information about what The Great Northumberland Forest can offer you, please get in touch. Our advice is free!

Scan here



nland.uk/GNF



Email: enquiries.forest@northumberland.gov.uk



[Listen and translate](#) [My Account](#)

[Home](#) [Pay](#) [Apply](#) [Report](#) [Councillors](#) [All Services](#)

Alerts

Library Alert: Corbridge Library & Tourist Information Centre will be closed on Sat 13 Nov

[View all](#)

Great Northumberland Forest

The Great Northumberland Forest is a plan to plant millions of trees, creating more wooded landscapes across the county.

[Home](#) > [Economy & Regeneration](#) > [Projects and Programmes](#) > [Rural Growth and Innovation Projects](#) > [Great Northumberland Forest](#)

Page Contents:

- > [The Vision](#)
- > [The Woodland Creation Partnership](#)
- > [Support and advice](#)
- > [Further information](#)
- > [Current Grants](#)
- > [Case studies](#)
- > [Progress since 2019](#)
- > [Contact us](#)
- > [Frequently asked questions](#)

Land ownership

Volunteering

Networks

Sponsorship



Date	Details
Friday 3 rd June 2022	Northumberland County Show (all day)
Friday 10 th June 2022	Drop-in session – The Ridley Arms, Stannington, NE61 6EL(5 – 8pm)
Wednesday 22 nd June 2022	Drop-in session – The Lion and Lamb, Horsley, NE15 0NS (5 – 8pm)
Wednesday 13 th July 2022	Drop-in session – Kirkharle Courtyard, NE19 2PE (10am – 4pm)
Saturday 13 th August 2022	Slaley Show
Saturday 20 th August 2022	Whittingham Show
Saturday 27 th August 2022	Bellingham Show
Monday 29 th August 2022	Glendale Show
Saturday 24 th September 2022	Upper Redesdale Show
Saturday 8 th October 2022	Alwinton Show

www.nland.uk/GNF

Enquiries.forest@northumberland.gov.uk